



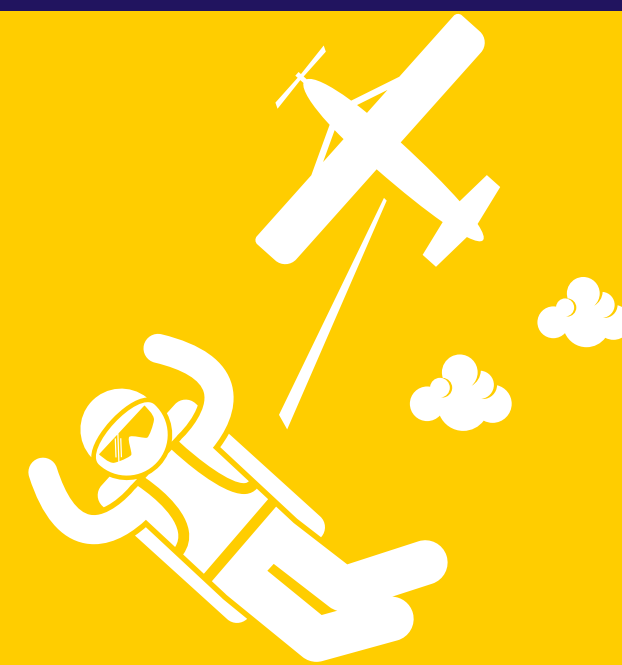
**SUPPORT  
THROUGH  
COURT**

# **MAKE THE JUMP FOR JUSTICE**



**Registered Charity: 1090781**

# SKYDIVE FOR SUPPORT THROUGH COURT



Support Through Court, formally the Personal Support Unit (PSU) aims to reduce the disadvantage of people facing the civil or family justice system without a lawyer, enabling them to access justice. We believe that no one should face court alone and so we work to provide immediate support to everyone who comes to us.

Reductions in legal aid and closure of advice centres in recent years have stripped away a vital element of support for a fair and just legal system. As laws are increasing in both quantity and complexity, the need for advice, support, and representation is greater than ever.

Our trained volunteers provide emotional and practical support to clients throughout the court process from 20 courts across England and Wales and via our National Helpline.

You have the opportunity to take on an incredible challenge whilst raising vital funds to help us continue supporting people facing court alone.

All you need to do is raise a minimum amount of sponsorship, starting at £360. Support Through Court and Skyline offer 3 different types of skydive - tandem, static line and accelerated freefall – to suit everyone.

You can jump from over 20 British Parachute Association approved airfields across the UK.

We will provide you with a dedicated fundraiser, a fundraising pack full of fundraising ideas, a t-shirt, poster template and any other fundraising materials you may need.

# SKYDIVE OPTIONS



## Tandem

The most popular option, suitable for anyone including a complete novice. After half an hour's training, you will be harnessed to a fully qualified British Parachute Association (BPA) instructor who will take full control of the jump. Diving from over 10,000 feet, soaring through the clouds at speeds of up to 120mph, you don't have to worry about anything except the utter exhilaration you will experience.

*Deposit: £70*

*Minimum Sponsorship: £395\**

*\*Minimum Sponsorship for Scotland and Northern Ireland airfields: £450*

## Static-Line Parachute Jump

A static line jump is a solo descent from 3,000 feet, with your parachute automatically activated upon exit from the aircraft. There is therefore no freefall involved. This could be a better option for someone who wants a gentler introduction to skydiving. One day of training at the airfield is required before you can complete this jump.

*Deposit: £70*

*Minimum Sponsorship: £360*

## Static-Line Parachute Jump

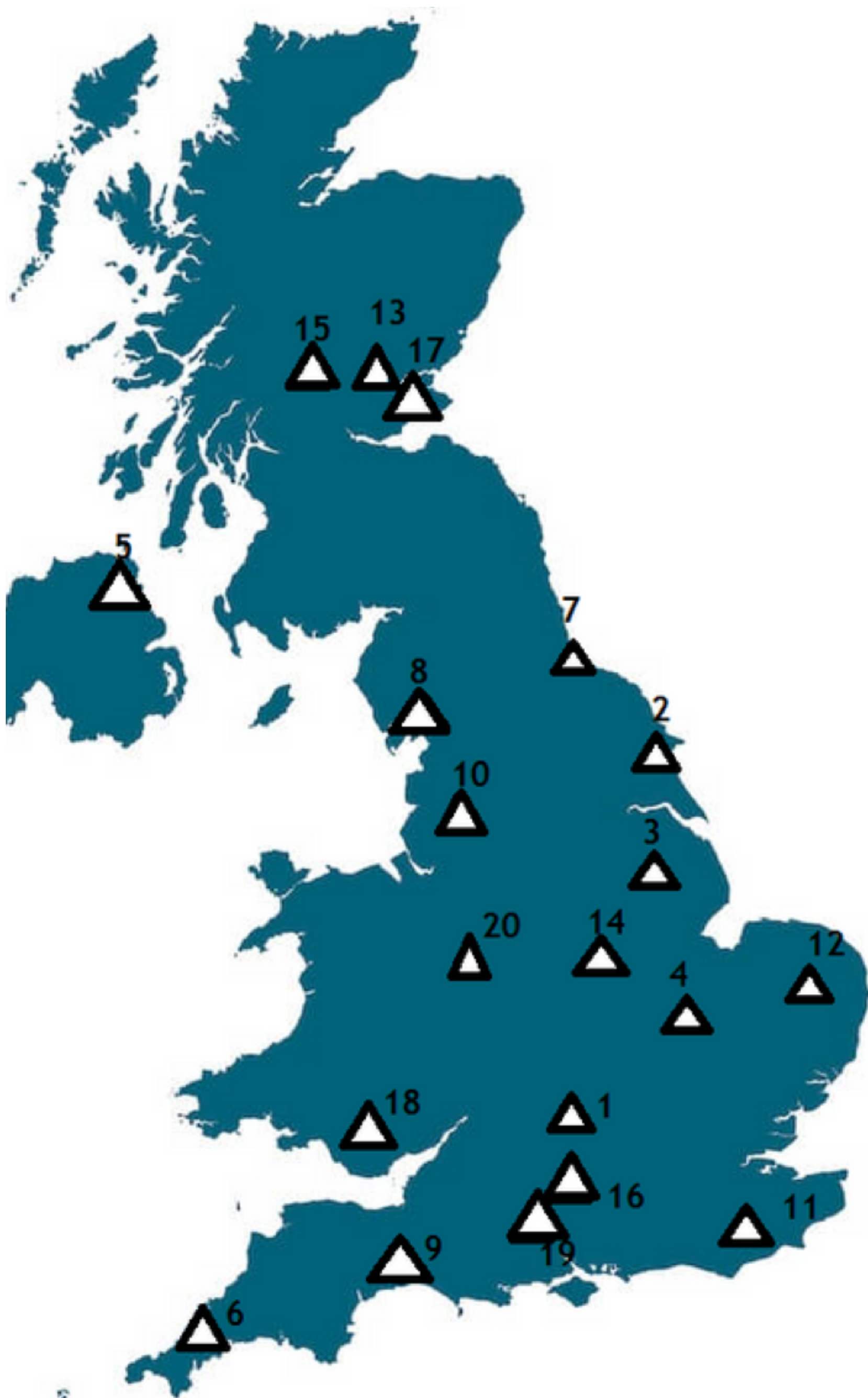
The accelerated freefall is similar to a tandem jump – but you will be jumping solo! Two BPA instructors will accompany you for every inch of your 10,000 feet descent but you will pull your own parachute cord. One full day of theoretical and practical training is required. A certificate will be awarded of completing level 1 accelerated freefall.

*Deposit: £70*

*Minimum Sponsorship: £525*



# CHOOSE WHERE TO JUMP FROM



1. Brackley
2. Bridlington
3. Brigg
4. Cambridgeshire
5. Coleraine
6. Cornwall
7. Durham
8. Grange-Over-Sands
9. Honiton
10. Lancaster
11. Maidstone
12. Norwich
13. Auchterarder
14. Nottingham
15. St Andrews
16. Salisbury
17. Errol
18. Swansea
19. Swindon
20. Whitchurch

# IMPORTANT INFORMATION



All our skydives are organised by Skyline Skydiving and take place at British Parachute Association approved centres across the UK.

## **Restrictions**

For a tandem skydive you must be at least 16 years old and be under 15 stone in weight.

Please note some centres have different weight limits - please contact Skyline for details.

The principal medical restrictions are diabetes, epilepsy, fits, recurrent blackouts, heart or lung disease, mental illness and some cases of asthma.

You will be required to sign a medical form before your jump declaring your fitness to take part - this will be sent to you upon receipt of your reservation form but is also available on request.

Those under the age of 18 will need the medical form signed by a parent or guardian; those aged 40 and over, or those with a medical condition, will need it signed by their doctor.

Pre-existing physical conditions will not necessarily prevent you from taking part but please inform Skyline of any physical condition as this may affect the location of your jump.

If you are in any doubt then please contact Skyline for further information.

# IMPORTANT INFORMATION

## CONT.



### Insurance

You will automatically be covered for up to £2,000,000 third party insurance but this will not cover you for personal injury.

Should you wish to take out cover for personal injury you should either arrange this through your own broker or you can contact Skyline on 0207 424 5505 to request a Personal Insurance Form.

### Costs

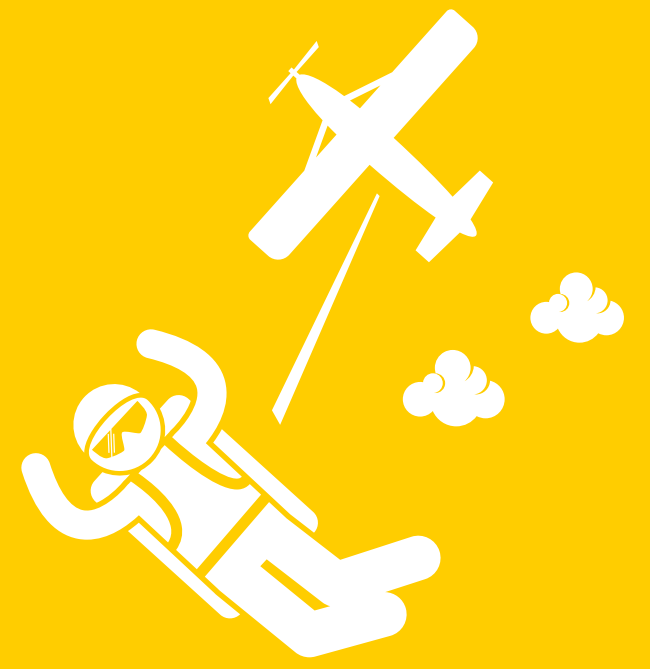
When booking your skydive you will be required to pay a £70 deposit to skyline this will secure your place.

Support Through Court will pay all the outstanding costs as soon as you reach your minimum fundraising target. (You should aim to reach your target 4 weeks before the event.)

If you are fundraising offline, we need to receive this money before we pay any costs. If you are raising money online, we just need you to notify us when you have reached your fundraising target.

### Skyline Skydives

**Skyline** is the provider of all jumps, with 28 years experience working with well over 3000 charities over the years. Skyline has stacks of experience and more than 100,000 successful and happy jumpers, the team at Skyline aim to give you the best, adrenaline filled experience possible and will be on hand at any time to answer any of your niggling questions, giving you the time to get yourself prepared for the ultimate challenge!



## NEXT STEPS

Read through the above 'important information' and different types of jump. Then all you need to do is choose a date for your jump and book on-line at:

**[www.skylineparachuting.co.uk/70242](http://www.skylineparachuting.co.uk/70242)**

If you would like to further discuss the different options of jumps or need help deciding which one is best for you please call Skyline on 0207 424 5505. A member of the team will be happy to provide any advice or assistance needed.

Once you have booked a date it is time to set up your fundraising page at **[Virgin Money Giving](#)** and get fundraising.

Our expert fundraising team are on hand to support your fundraising efforts and provide any additional materials or posters you may need.

If you have any questions about fundraising for your skydive please get in touch:

**[events@supportthroughcourt.org](mailto:events@supportthroughcourt.org)**

**020 7947 6358**

Support Through Court  
Royal Courts of Justice  
Strand  
London  
WC2A 2LL



**[www.supportthroughcourt.org](http://www.supportthroughcourt.org)**